



Fascin (ABT-FASN) mouse mAb

Catalog No	YP-Ab-15266
Isotype	IgG
Reactivity	Human;Mouse;Rat
Applications	IHC,WB
Gene Name	FSCN1 FAN1 HSN SNL
Protein Name	Fascin (55 kDa actin-bundling protein) (Singed-like protein) (p55)
Immunogen	Synthesized peptide derived from human Fascin
Specificity	This antibody detects endogenous levels of human Fascin. Heat-induced epitope retrieval (HIER) TRIS-EDTA of pH8.0 was highly recommended as antigen repair method in paraffin section
Formulation	Liquid in PBS containing 50% glycerol, 0.5% BSA and 0.02% sodium azide.
Source	Mouse, Monoclonal/IgG1, Kappa
Purification	The antibody was affinity-purified from mouse ascites by affinity-chromatography using specific immunogen.
Dilution	IHC-p 1:100-500, WB 1:500-2000
Concentration	1 mg/ml
Purity	≥90%
Storage Stability	-20°C/1 year
Synonyms	
Observed Band	
Cell Pathway	Cytoplasm, cytosol . Cytoplasm, cell cortex . Cytoplasm, cytoskeleton . Cytoplasm, cytoskeleton, stress fiber . Cell projection, filopodium . Cell projection, invadopodium . Cell projection, microvillus . Cell junction . Colocalized with RUFY3 and F-actin at filipodia of the axonal growth cone. Colocalized with DBN1 and F-actin at the transitional domain of the axonal growth cone (By similarity). .
Tissue Specificity	Ubiquitous.
Function	disease:Marks and mediates breast cancer metastasis to the lungs. FSCN1 is not functionally validated but achieves the highest statistical significance (P less than 0.000001). Those subjects expressing the lung metastasis signature have a significantly poorer lung metastasis-free survival, but not bone metastasis-free survival, compared to subjects without the signature.,function:Organizes filamentous actin into bundles with a minimum of 4.1:1 actin/fascin ratio. Probably involved in the assembly of actin filament bundles present in microspikes, membrane ruffles, and stress fibers.,PTM:Phosphorylation on Ser-39 inhibits the actin-binding ability of fascin.,similarity:Belongs to the fascin family.,subunit:Associates with beta-catenin.,tissue specificity:Ubiquitous.,



Background

This gene encodes a member of the fascin family of actin-binding proteins. Fascin proteins organize F-actin into parallel bundles, and are required for the formation of actin-based cellular protrusions. The encoded protein plays a critical role in cell migration, motility, adhesion and cellular interactions. Expression of this gene is known to be regulated by several microRNAs, and overexpression of this gene may play a role in the metastasis of multiple types of cancer by increasing cell motility. Expression of this gene is also a marker for Reed-Sternberg cells in Hodgkin's lymphoma. A pseudogene of this gene is located on the long arm of chromosome 15. [provided by RefSeq, Sep 2011],

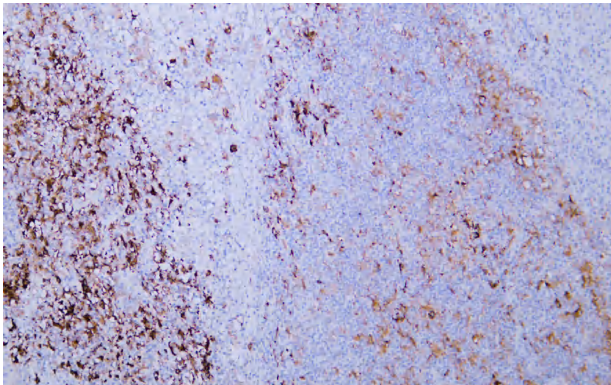
matters needing attention

Avoid repeated freezing and thawing!

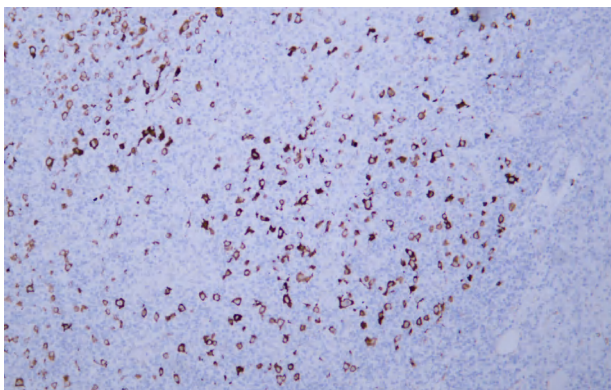
Usage suggestions

This product can be used in immunological reaction related experiments. For more information, please consult technical personnel.

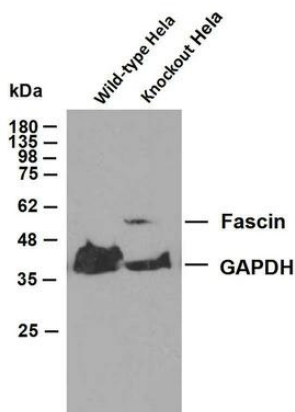
Products Images



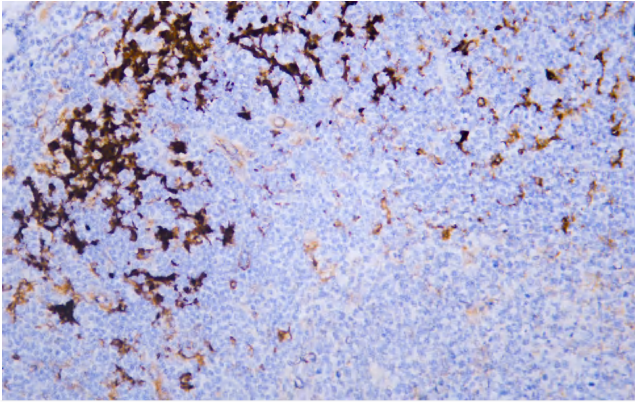
Human Hodgkin lymphoma tissue was stained with Anti-Fascin (ABT-FASN) Antibody



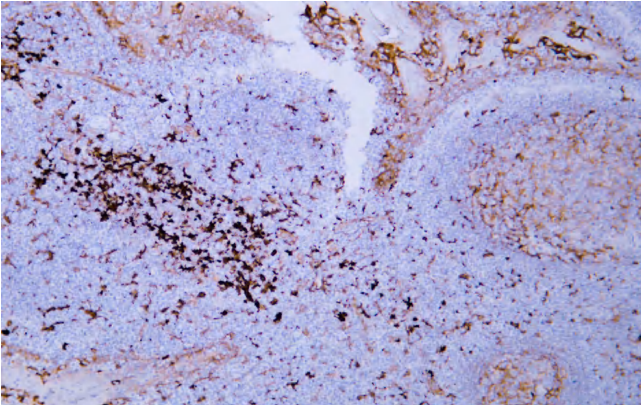
Human Hodgkin lymphoma tissue was stained with Anti-Fascin (ABT-FASN) Antibody



Various whole cell lysates were separated by 10% SDS-PAGE, and the membrane was blotted with anti-Fascin and anti-GAPDH antibody. The HRP-conjugated anti-Mouse IgG antibody was used to detect the antibody. Lane 1 : Fascin knockout HeLa cell lysate Lane 2 : Wide type HeLa cell lysate Predicted band size: 55 kDa



Human tonsil tissue was stained with Anti-Fascin (ABT-FASN) Antibody



Human tonsil tissue was stained with Anti-Fascin (ABT-FASN) Antibody